



# OFFICE/MEDICAL SPACE FOR LEASE

## GOLF CORPORATE CENTER 415 W. GOLF ROAD, ARLINGTON HEIGHTS, IL



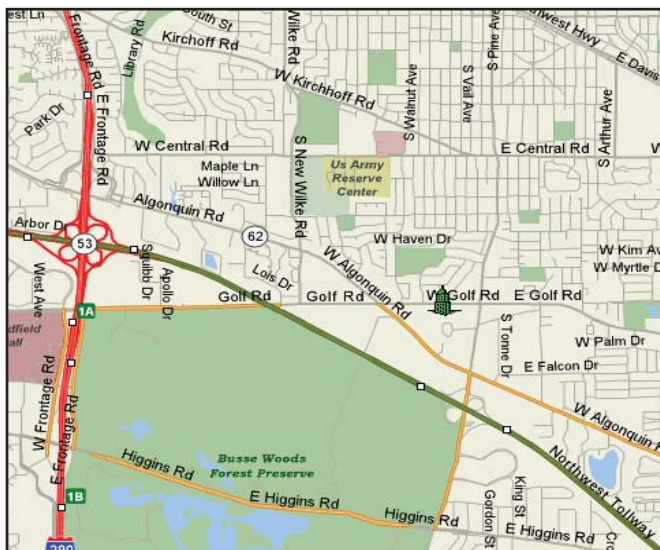
### BUILDING FEATURES:

- 385–6,914 SF Available
- 24 hour access/tenant controlled HVAC
- Zoned M-2
- High End flexible build outs and terms
- Comcast High Speed Internet & TV Available
- Tenant signage available

- Minutes from Rt. 53 or I-90
- Located at stoplight intersection of Golf & Algonquin Rds
- Pace Bus Stop located at property
- Walking distance to restaurants & hotels
- Fedex & UPS drop boxes on site
- Professional Property management
- **Rental Rate: \$14.00-\$15.50 Modified Gross**

### AVAILABLE SPACE:

SUITE	SIZE (SF)
14 A	385
14 C	893
18	1,516
22 (Avail. in 60 Days)	919
26/29 (Divisible)	2,954
32	6,914
33	2,754
34	1,350
35/36	1,873
34/35/36	3,223
39	994
46	879



### FOR MORE INFORMATION:

RANDY OLCZYK  
 Direct: 847.246.9611  
 randy@chicagolandcommercial.com

LINDSAY BORKAN  
 Direct: 847.246.9633  
 lindsay@chicagolandcommercial.com



1240 W. Northwest Hwy., Palatine, IL 60067





# OFFICE/MEDICAL SPACE FOR LEASE

GOLF CORPORATE CENTER 415 W. GOLF ROAD, ARLINGTON HEIGHTS, IL

## BUILDING PHOTOGRAPHS



### IMPROVEMENTS

Over \$250,000 In Recent Property Improvements. Including New Landscaping & Deck/Patio areas throughout.



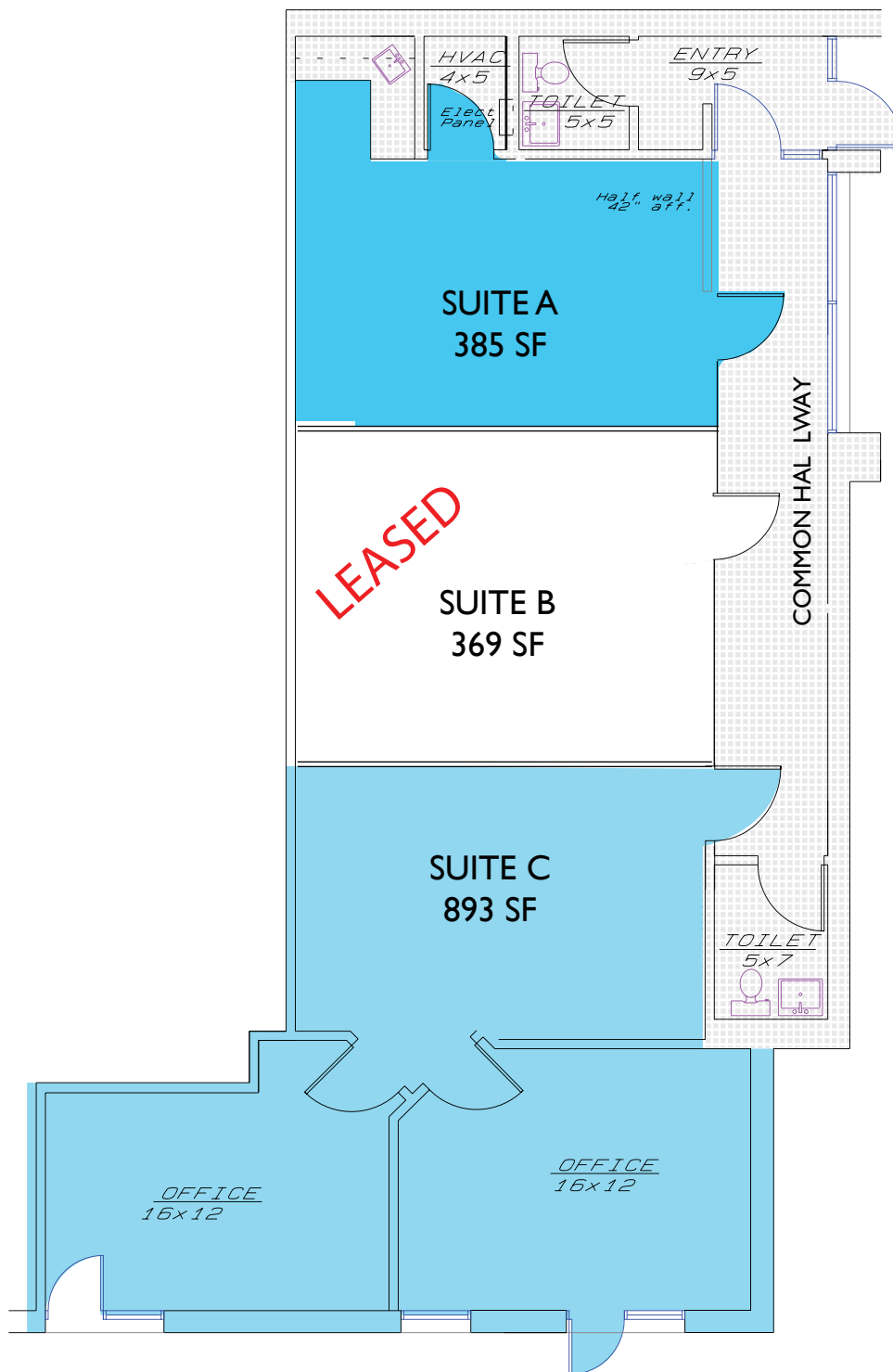




# OFFICE/MEDICAL SPACE FOR LEASE

GOLF CORPORATE CENTER 415 W. GOLF ROAD, ARLINGTON HEIGHTS, IL

FLOOR PLAN - SUITE 14 A-C  
385-893 SF

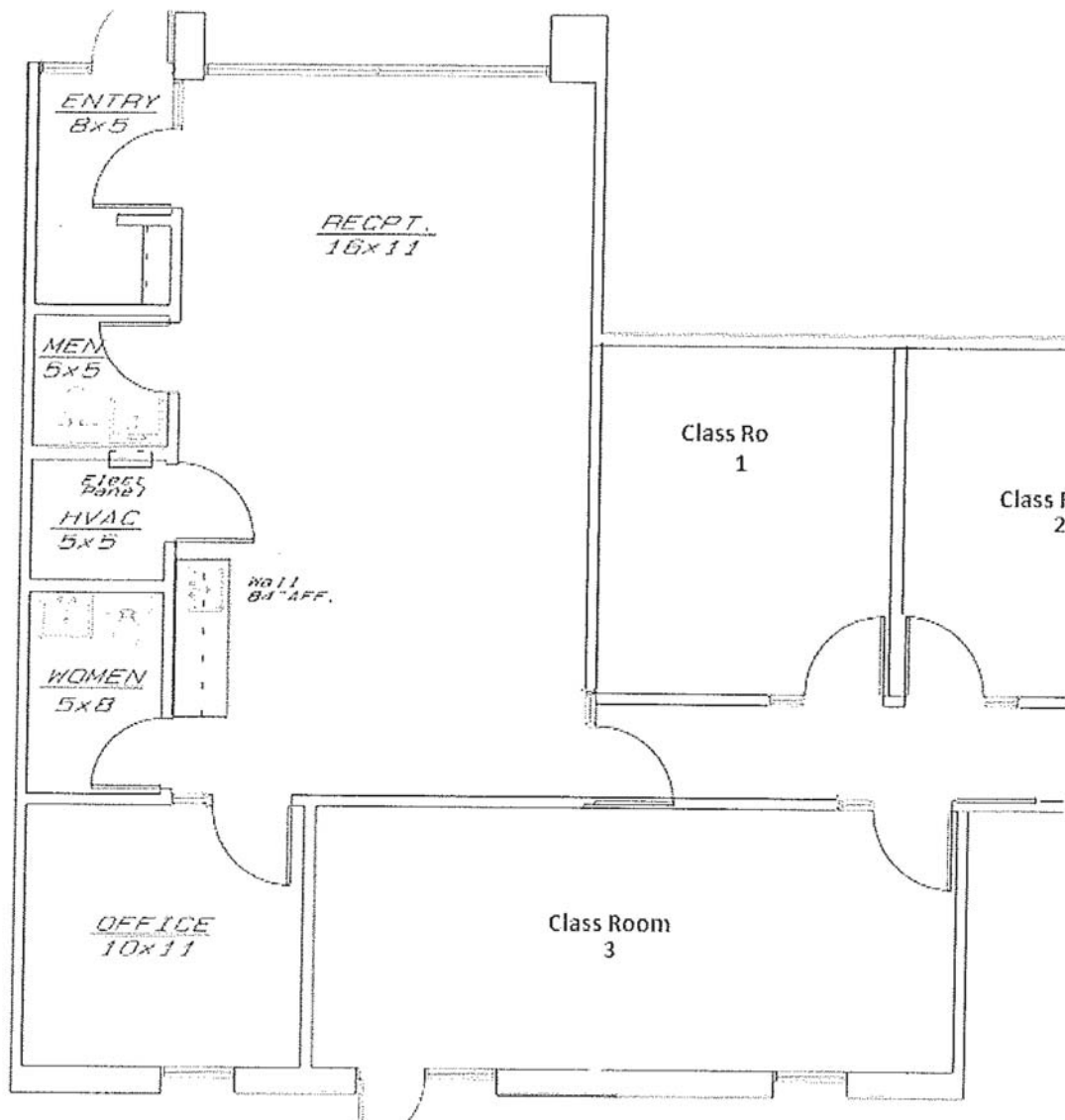




# OFFICE/MEDICAL SPACE FOR LEASE

GOLF CORPORATE CENTER 415 W. GOLF ROAD, ARLINGTON HEIGHTS, IL

FLOOR PLAN - SUITE 18  
1,516 SF



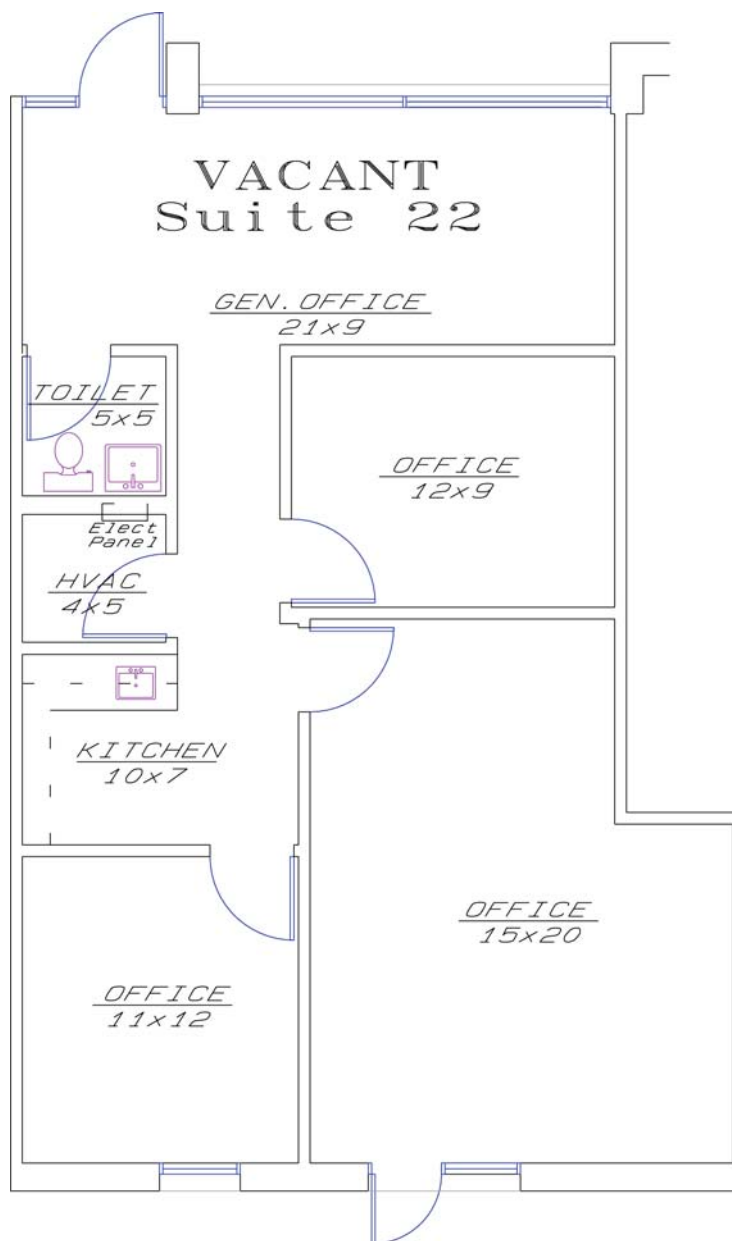




# OFFICE/MEDICAL SPACE FOR LEASE

GOLF CORPORATE CENTER 415 W. GOLF ROAD, ARLINGTON HEIGHTS, IL

FLOOR PLAN - SUITE 22  
919 SF

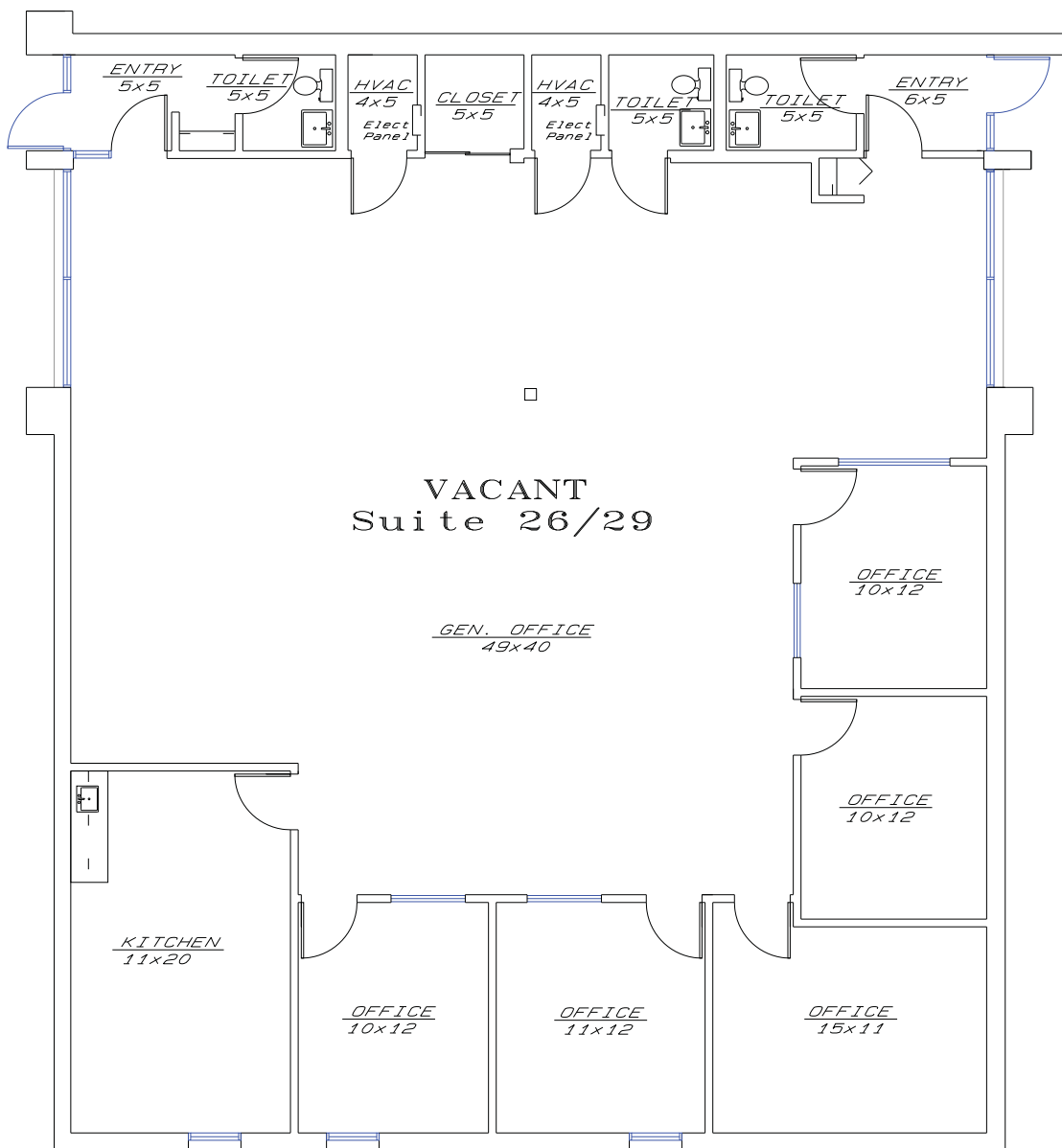




# OFFICE/MEDICAL SPACE FOR LEASE

## GOLF CORPORATE CENTER 415 W. GOLF ROAD, ARLINGTON HEIGHTS, IL

FLOOR PLAN - SUITE 26/29  
2,954 SF



### FOR MORE INFORMATION:

RANDY OLCZYK  
President/Principal  
Direct: 847.246.9611  
randy@chicagolandcommercial.com

BILL LUSSOW  
Vice President/Principal  
Direct: 847.246.9613  
bill@chicagolandcommercial.com



1240 W. Northwest Hwy., Palatine, IL 60067

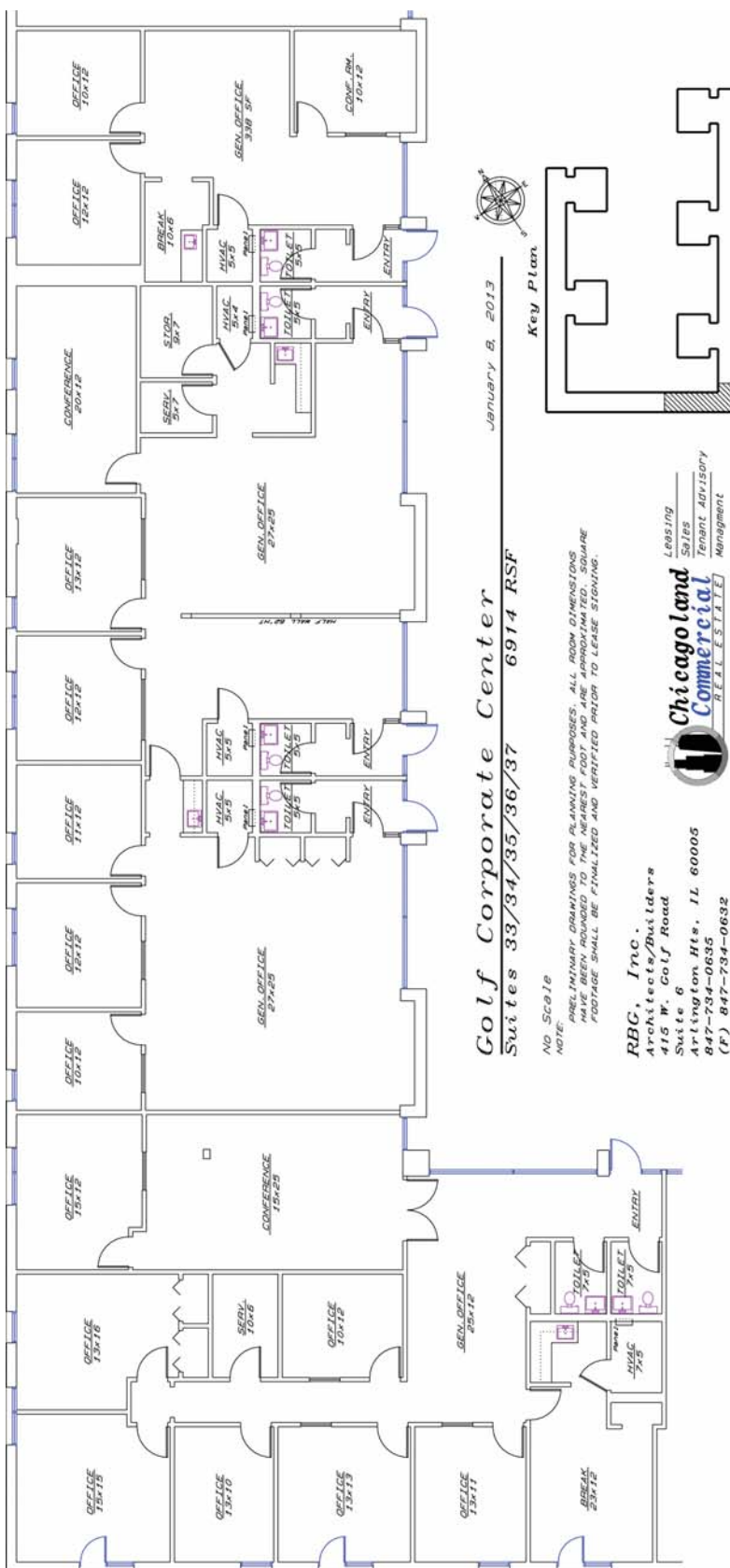
Brokers of Chicagoland Commercial, Inc. have a minority ownership interest in the property. Information contained herein has been obtained from the owners of the property or from other sources that we deem reliable. We have no reason to doubt its accuracy, but do not guarantee it.



# OFFICE/MEDICAL SPACE FOR LEASE

## GOLF CORPORATE CENTER 415 W. GOLF ROAD, ARLINGTON HEIGHTS, IL

FLOOR PLAN - SUITE 32  
6,914 SF



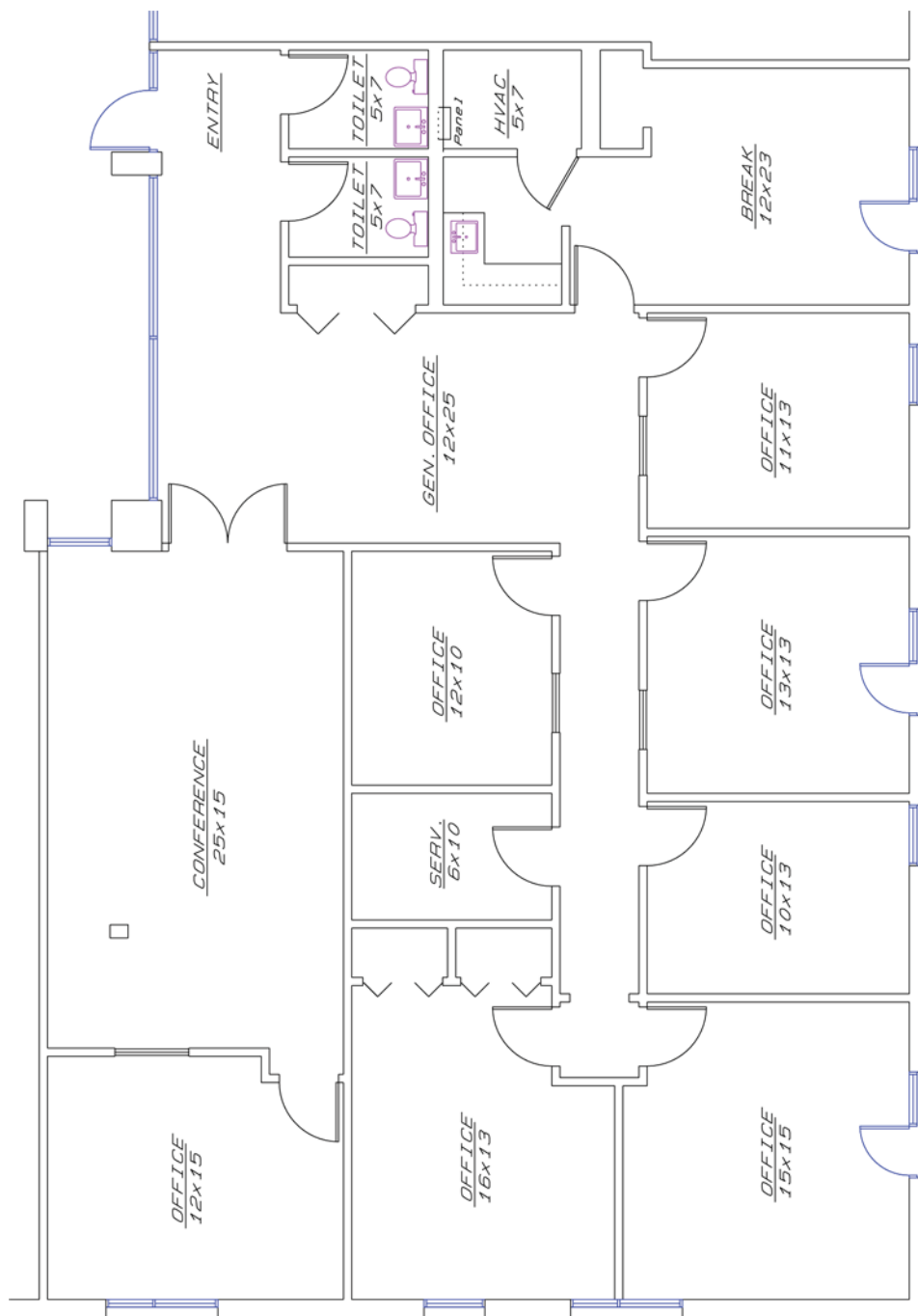




# OFFICE/MEDICAL SPACE FOR LEASE

GOLF CORPORATE CENTER 415 W. GOLF ROAD, ARLINGTON HEIGHTS, IL

FLOOR PLAN - SUITE 33  
2,754 SF

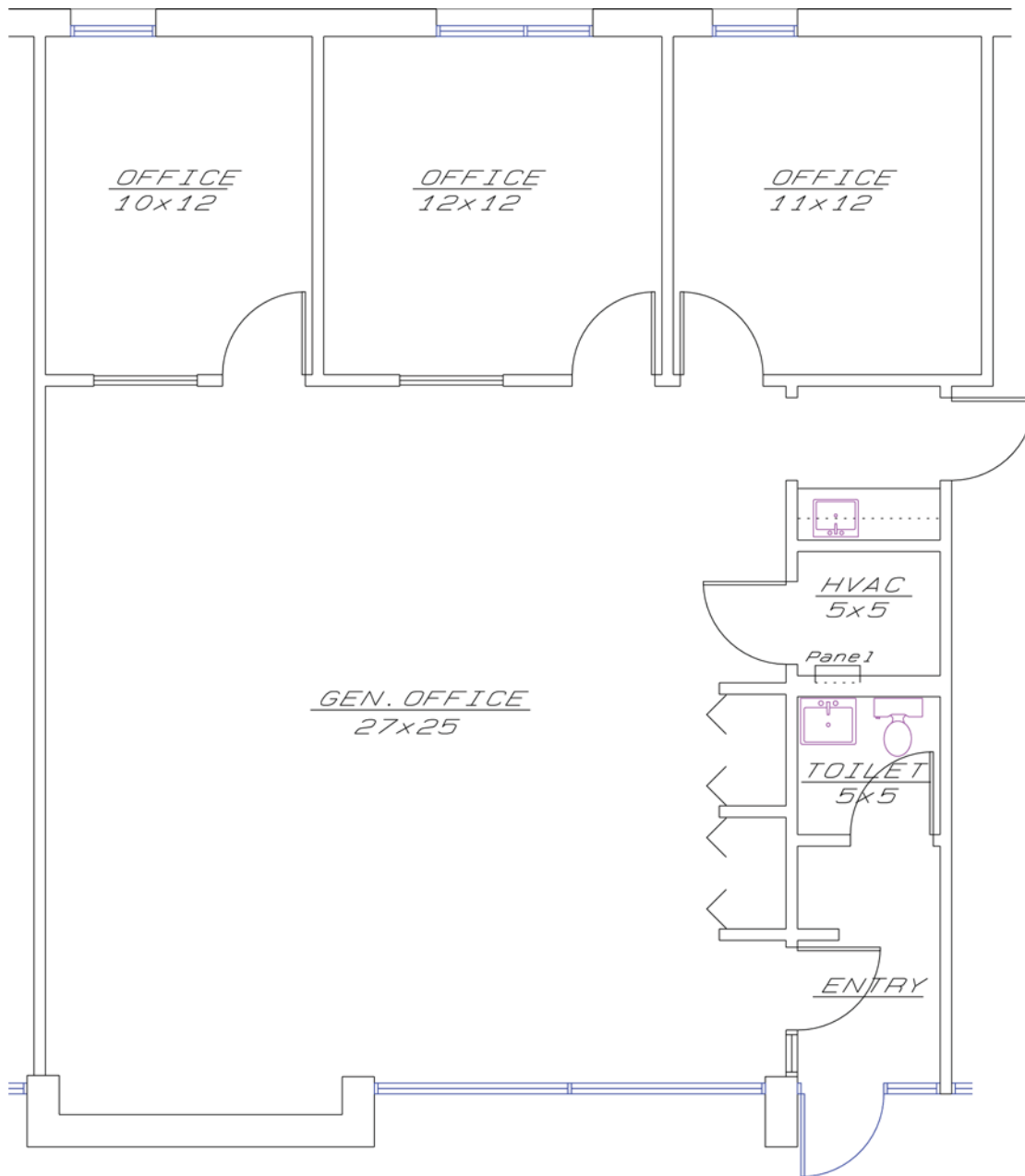




# OFFICE/MEDICAL SPACE FOR LEASE

GOLF CORPORATE CENTER 415 W. GOLF ROAD, ARLINGTON HEIGHTS, IL

FLOOR PLAN - SUITE 34  
1,350 SF

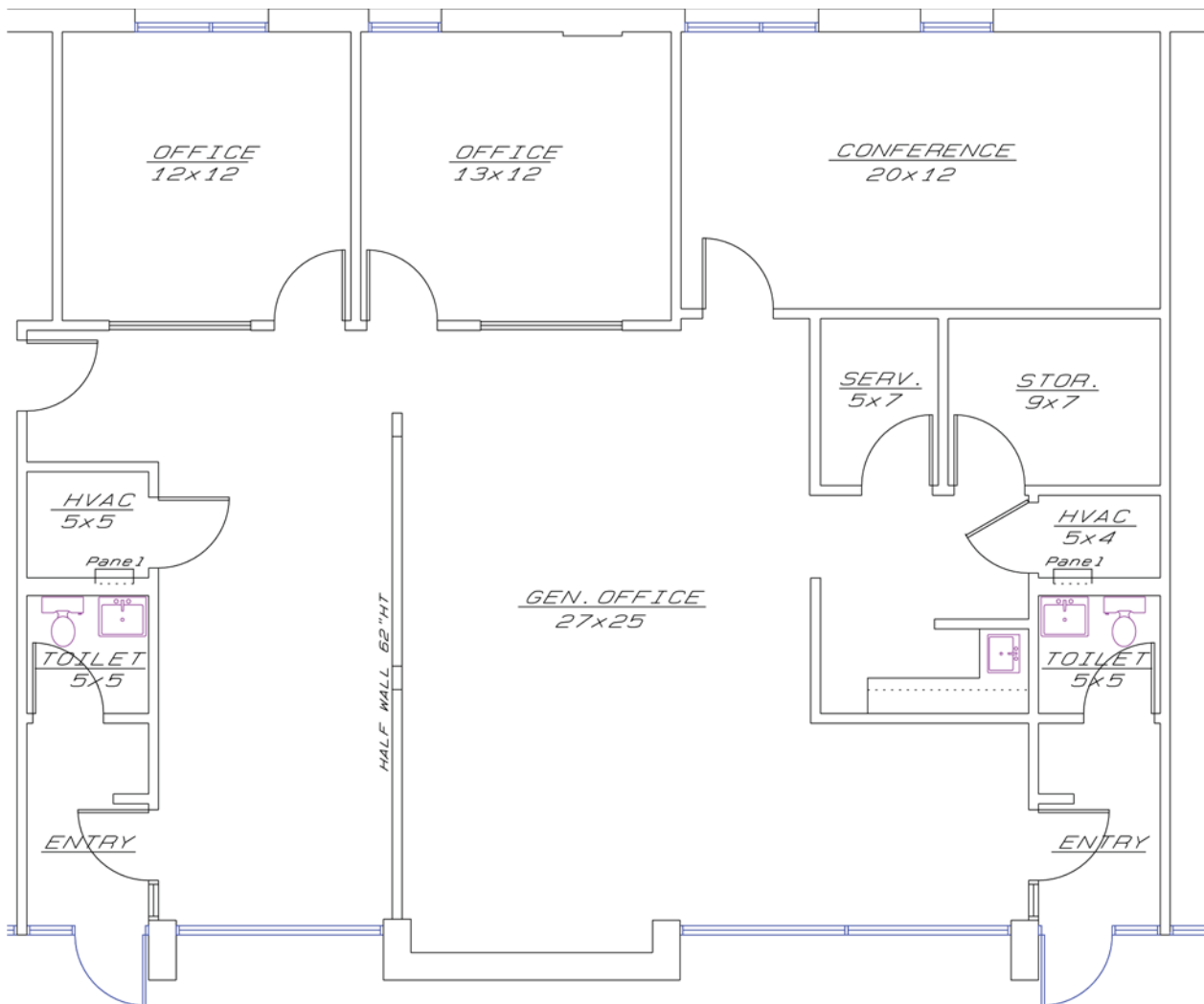




# OFFICE/MEDICAL SPACE FOR LEASE

GOLF CORPORATE CENTER 415 W. GOLF ROAD, ARLINGTON HEIGHTS, IL

FLOOR PLAN - SUITE 35-36  
1,873 SF

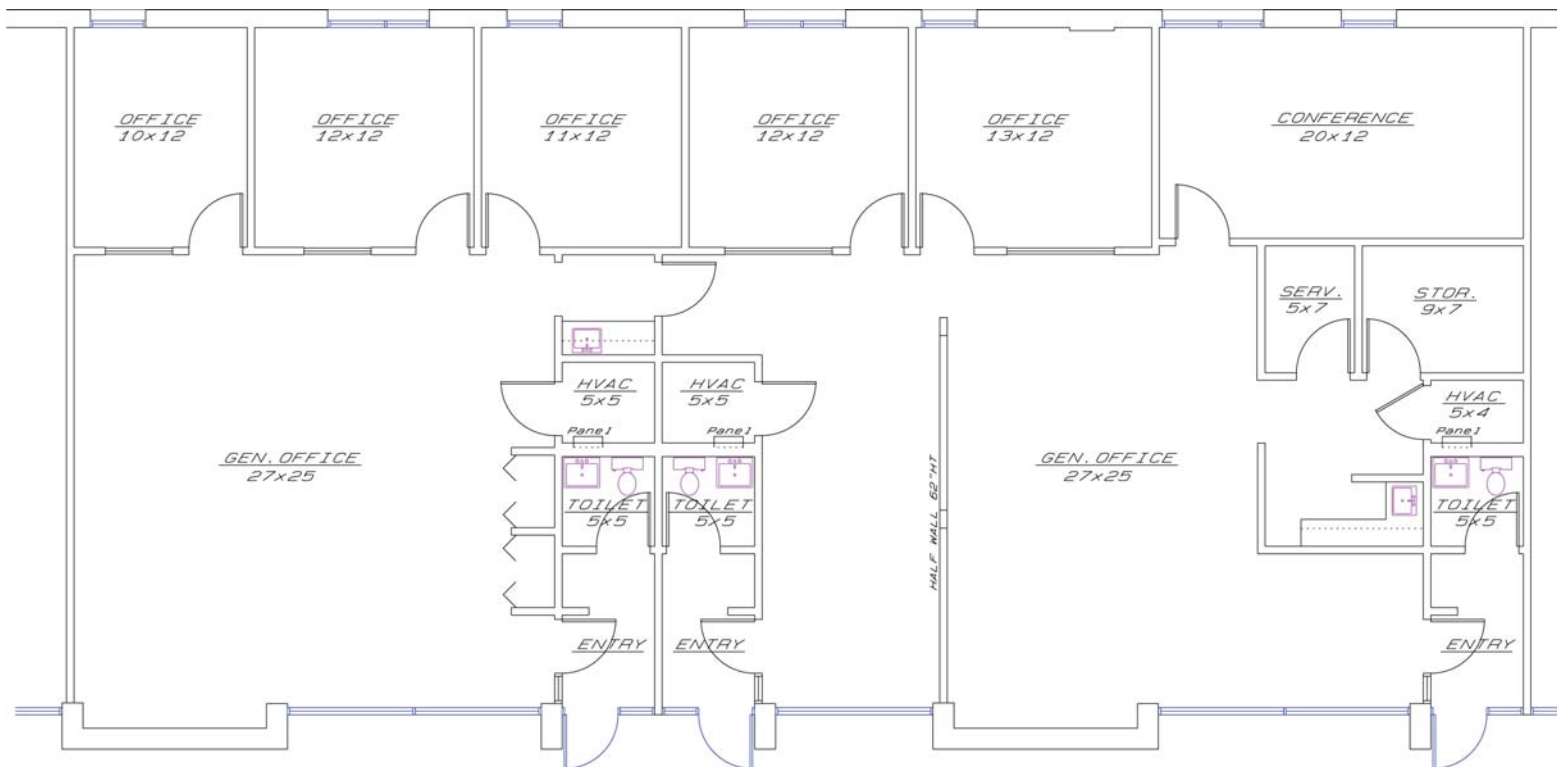




# OFFICE/MEDICAL SPACE FOR LEASE

GOLF CORPORATE CENTER 415 W. GOLF ROAD, ARLINGTON HEIGHTS, IL

FLOOR PLAN - SUITE 34-36  
3,223 SF



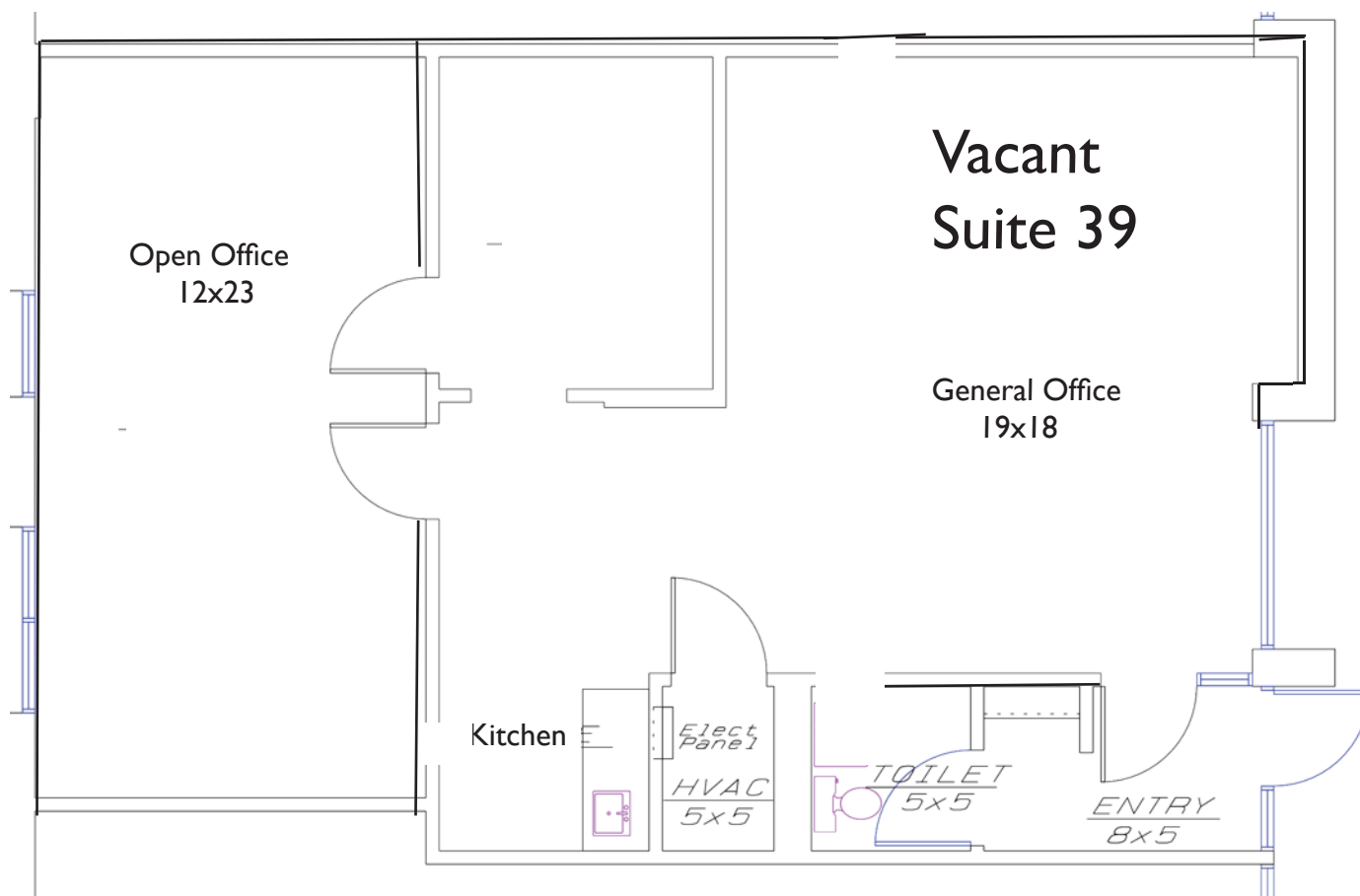




# OFFICE/MEDICAL SPACE FOR LEASE

GOLF CORPORATE CENTER 415 W. GOLF ROAD, ARLINGTON HEIGHTS, IL

FLOOR PLAN - SUITE 39  
994 SF

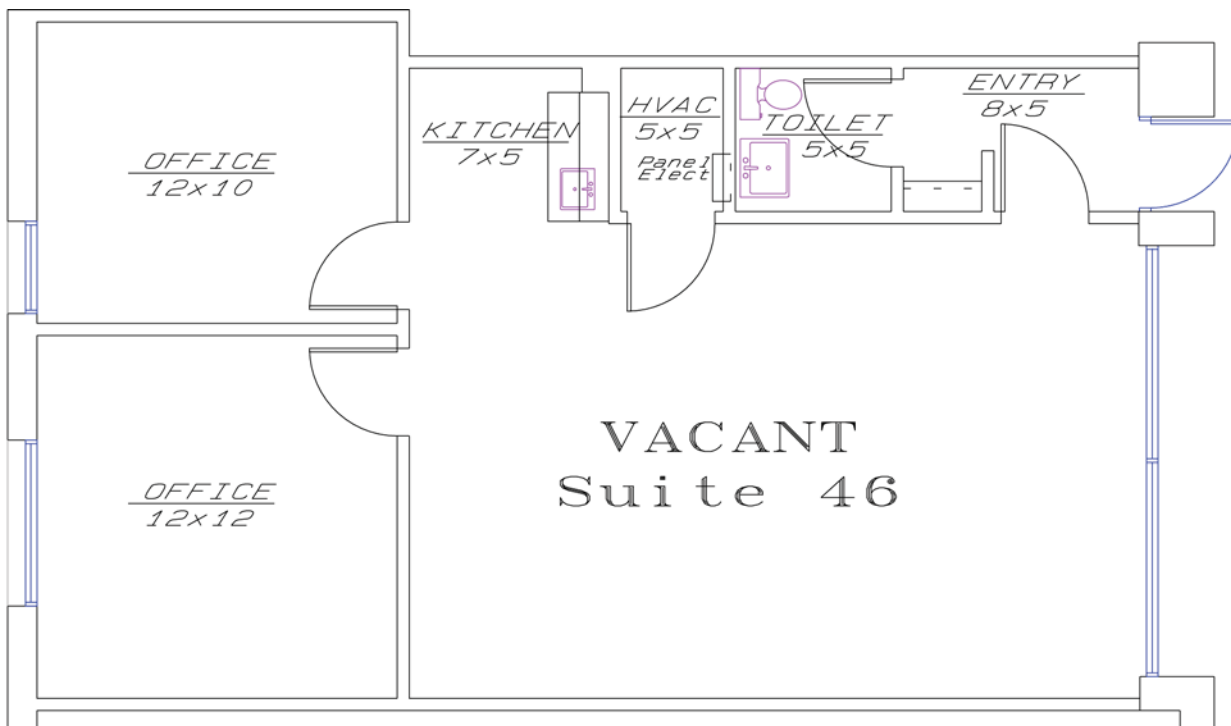




# OFFICE/MEDICAL SPACE FOR LEASE

GOLF CORPORATE CENTER 415 W. GOLF ROAD, ARLINGTON HEIGHTS, IL

FLOOR PLAN - SUITE 46  
879 SF



*Golf Corporate Center*  
415 Golf Rd. Suite 46 879 Total SF

January 22, 2010  
No Scale

